

Burndown Control of Giant Ragweed Janesville, WI 2020

Trial Information

Trial Sponsor: Wisconsin Cropping Systems Weed Science

Objective: Evaluate and demonstrate the effectiveness of multiple single active ingredient POST corn and soybean herbicides on giant ragweed

Crop: none

Variety: -

Weed species (pressure): Giant ragweed (moderate-very high)

Herbicide Application(s): POST – 5/27 (1-4” giant ragweed; Avg = 2”)

For the full report see trial #20-ROK-BG04 in the [2020 Wisconsin Weed Science Research Report](#)



Cropping Systems Weed Science
UNIVERSITY OF WISCONSIN-MADISON

Burndown Control of Giant Ragweed Janesville, WI 2020

Key Take Home Points from 2020 Data:

- Several herbicides provided excellent burndown control of giant ragweed
- None of the ALS (group 2) herbicides had >50% control 14 DAT
 - We suspect some level of ALS resistance in this population
- Not all active ingredients withing a given SOA group are equal
- Using an effective PRE herbicide to reduce density and size of waterhemp can help improve POST weed control



Giant Ragweed Control %		
Herbicide Treatment*	7 DAT	14 DAT
4 fl oz Pursuit	43	33
0.75 oz Classic	60	35
0.3 oz FirstRate	52	44
1 oz Python	36	24
22 fl oz XtendiMax	84	98
32 fl oz Enlist One	84	97
6 fl oz Stinger	69	78
2 pt AAtrex	89	83
1.5 pt Buctril	99	97
1.6 pt Basagran	94	82
32 fl oz Roundup PMAX	99	98
32 fl oz Liberty	97	100
12.5 fl oz Cobra	100	99
1 pt Flexstar	97	88
0.9 fl oz Cadet	84	50
8 fl oz Resource	86	61
3 fl oz Callisto	86	95
3 fl oz Laudis	83	99
0.75 fl oz Armezon	83	99
5 fl oz Balance Flexx	85	94
LSD (0.10)	7	14
p-value	<0.01	<0.01
*All treatments included the appropriate adjuvants		

Day of application (5/27)



Burndown Control of Giant Ragweed Janesville, WI 2020

Plot pictures taken on 6/3
7 days after application

The number in the upper right-hand corner is the average % giant ragweed control of 4 replications

7 days after POST (6/3)

POST: 4 fl oz Pursuit + 1.25% COC + 2 lb AMS

43%



7 days after POST (6/3)

POST: 0.75 oz Classic + 1% COC + 2 lb AMS

60%



7 days after POST (6/3)

POST: 0.3 oz FirstRate + 1.2% COC + 2 lb AMS

52%



7 days after POST (6/3)

POST: 1 oz Python + 1% COC + 2 lb AMS

36%



7 days after POST (6/3)

POST: 22 fl oz XtendiMax + 1% Class Act Ridion

84%



7 days after POST (6/3)
POST: 32 fl oz Enlist One + 2 lb AMS

84%



7 days after POST (6/3)
POST: 6 fl oz Stinger

69%



7 days after POST (6/3)
POST: 2 pt AAtrex + 1 qt COC

89%



7 days after POST (6/3)
POST: 1.5 pt Buctril

99%



7 days after POST (6/3)

94%

POST: 1.6 pt Basagran + 1% COC + 2 lb AMS



7 days after POST (6/3)

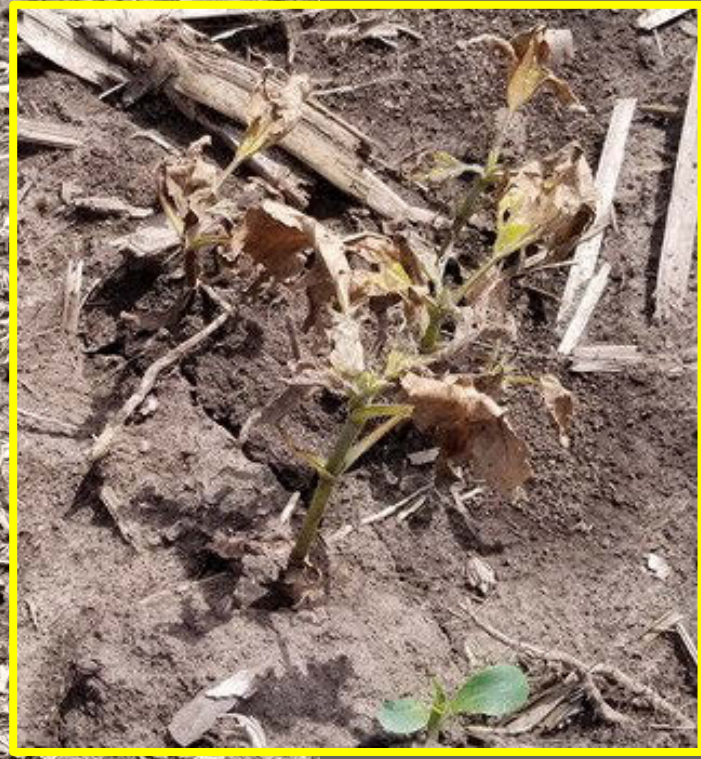
POST: 32 fl oz Roundup PowerMAX + 2 lb AMS

99%



7 days after POST (6/3)
POST: 32 fl oz Liberty + 2 lb AMS

97%



7 days after POST (6/3)

POST: 12.5 fl oz Cobra + 1.5 pt COC + 2 lb AMS

100%



7 days after POST (6/3)

97%

POST: 1 pt Flexstar + 1% COC + 2 lb AMS



7 days after POST (6/3)

POST: 0.9 fl oz Cadet + 1% COC + 2 lb AMS

84%



7 days after POST (6/3)

86%

POST: 8 fl oz Resource + 1 qt COC + 2 lb AMS



7 days after POST (6/3)

POST: 3 fl oz Callisto + 1% COC + 2 lb AMS

86%



7 days after POST (6/3)

POST: 3 fl oz Laudis + 1% MSO + 2 lb AMS

83%



7 days after POST (6/3)

POST: 0.75 fl oz Armezon + 1% MSO + 2 lb AMS

83%



7 days after POST (6/3)

POST: 5 fl oz Balance Flexx + 1% MSO + 2 lb AMS

85%

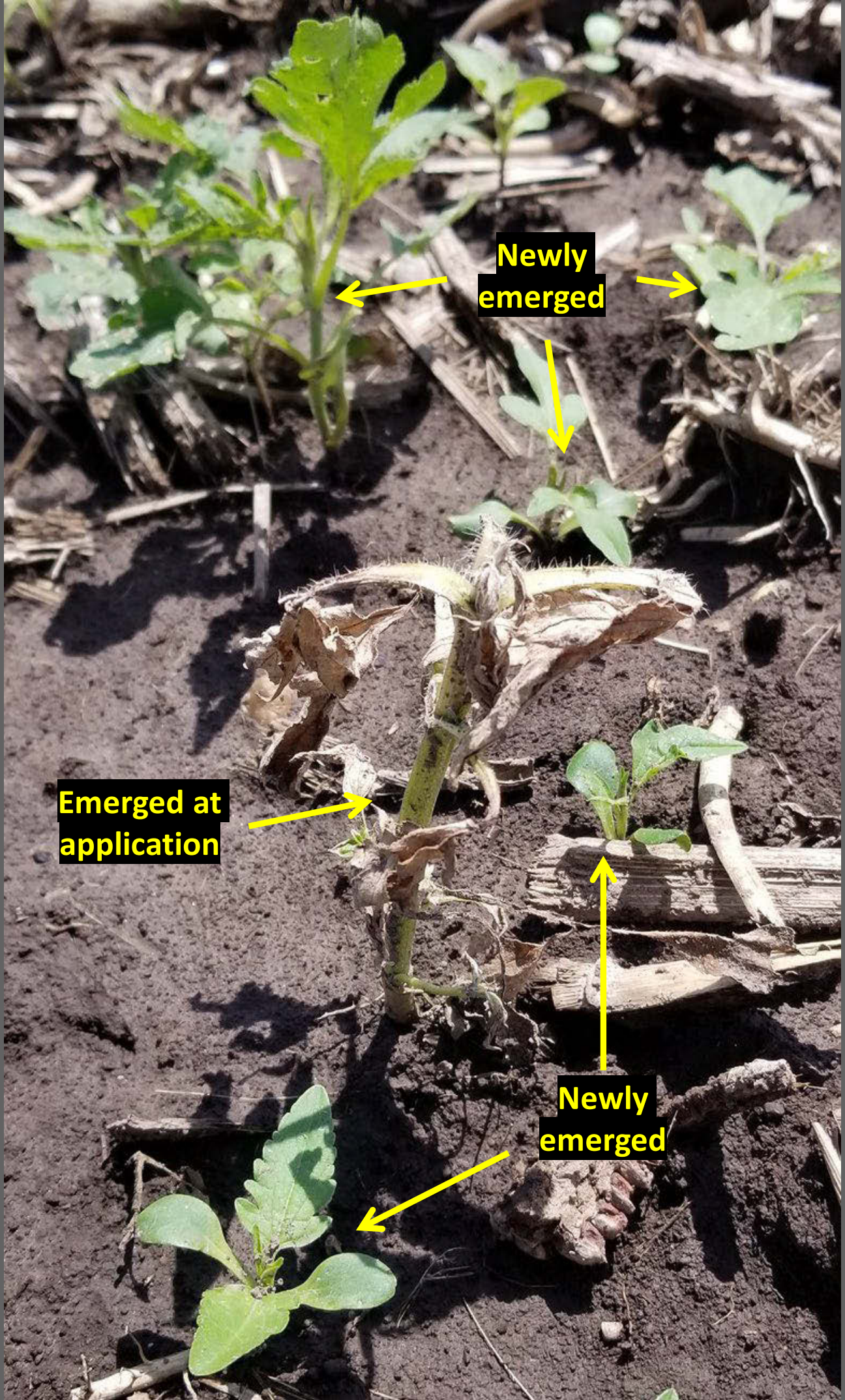


Burndown Control of Giant Ragweed Janesville, WI 2020

Plot pictures taken on 6/10 14 days after application

The number in the upper right-hand corner is the average % giant ragweed control of 4 replications

Newly emerging giant ragweed seedlings were not included in the control ratings. Only giant ragweed present at the POST application were rated. See photo on next page for illustration.



Newly emerged

Emerged at application

Newly emerged

14 days after POST (6/10)

POST: 4 fl oz Pursuit + 1.25% COC + 2 lb AMS

33%



14 days after POST (6/10)

POST: 0.75 oz Classic + 1% COC + 2 lb AMS

35%



14 days after POST (6/10)

POST: 0.3 oz FirstRate + 1.2% COC + 2 lb AMS

44%

Missing Photo

14 days after POST (6/10)
POST: 1 oz Python + 1% COC + 2 lb AMS

24%



14 days after POST (6/10)

POST: 22 fl oz XtendiMax + 1% Class Act Ridion

98%



14 days after POST (6/10)
POST: 32 fl oz Enlist One + 2 lb AMS

97%



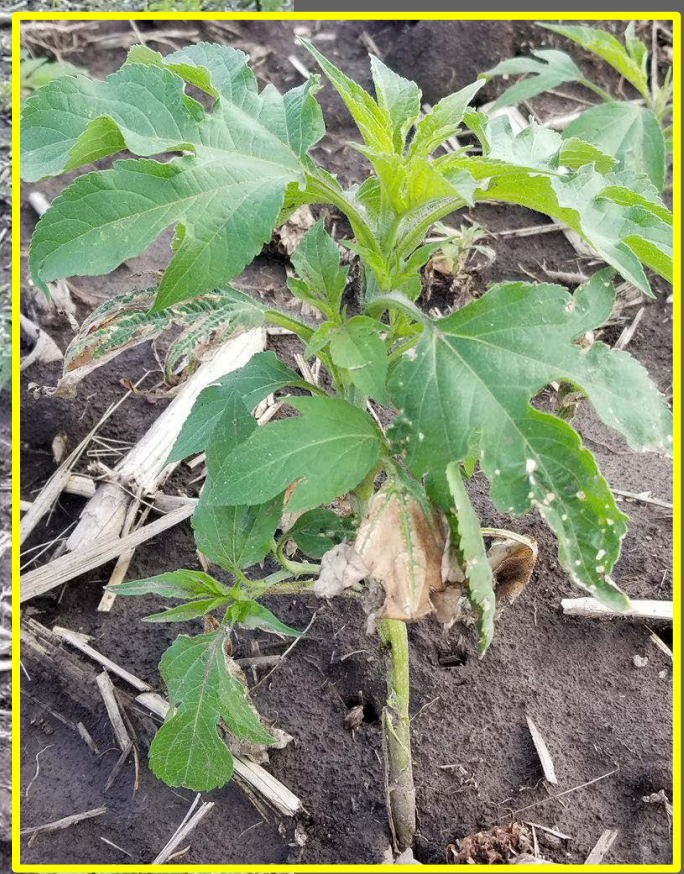
14 days after POST (6/10)
POST: 6 fl oz Stinger

78%



14 days after POST (6/10)
POST: 2 pt AArex + 1 qt COC

83%



Missing Photo

14 days after POST (6/10)
POST: 1.6 pt Basagran + 1% COC + 2 lb AMS

82%



Regrowth

14 days after POST (6/10)

POST: 32 fl oz Roundup PowerMAX + 2 lb AMS

98%



Missing Photo

14 days after POST (6/10)

POST: 12.5 fl oz Cobra + 1.5 pt COC + 2 lb AMS

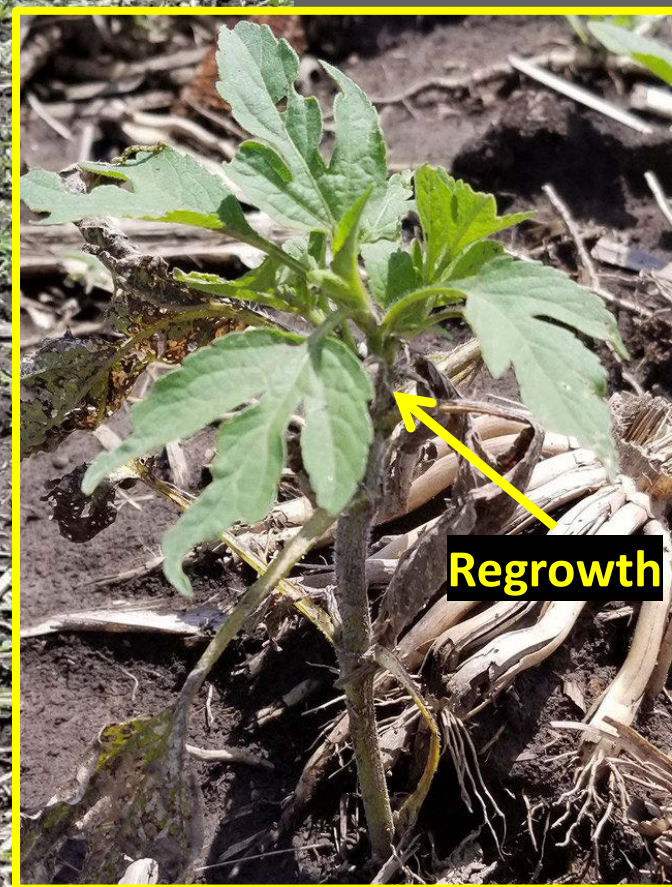
99%



14 days after POST (6/10)

POST: 1 pt Flexstar + 1% COC + 2 lb AMS

88%



14 days after POST (6/10)

POST: 0.9 fl oz Cadet + 1% COC + 2 lb AMS

50%



14 days after POST (6/10)

POST: 8 fl oz Resource + 1 qt COC + 2 lb AMS

61%



14 days after POST (6/10)

POST: 3 fl oz Callisto + 1% COC + 2 lb AMS

95%



14 days after POST (6/10)

POST: 3 fl oz Laudis + 1% MSO + 2 lb AMS

99%



14 days after POST (6/10)

POST: 0.75 fl oz Armezon + 1% MSO + 2 lb AMS

99%



14 days after POST (6/10)

POST: 5 fl oz Balance Flexx + 1% MSO + 2 lb AMS

94%

